

Breeze™

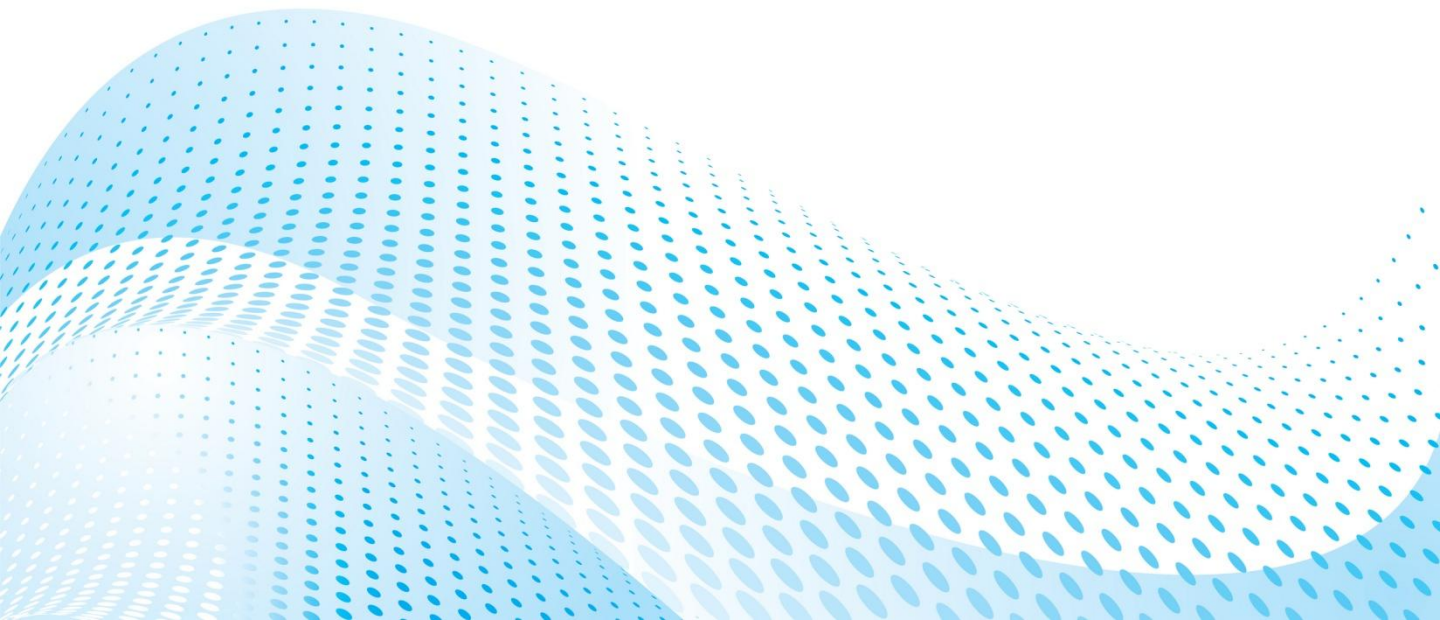
“Taking the pressure off you is a Breeze”

We are enhancing the comfort of our AdaptaFlex line of memory foams with the cool comfort of *Breeze*.

The *Breeze* process opens hundreds of air channels to allow the memory foam to breathe with you as you sleep. A cooler night sleep is created by increased air circulation through AdaptaFlex with *Breeze*.

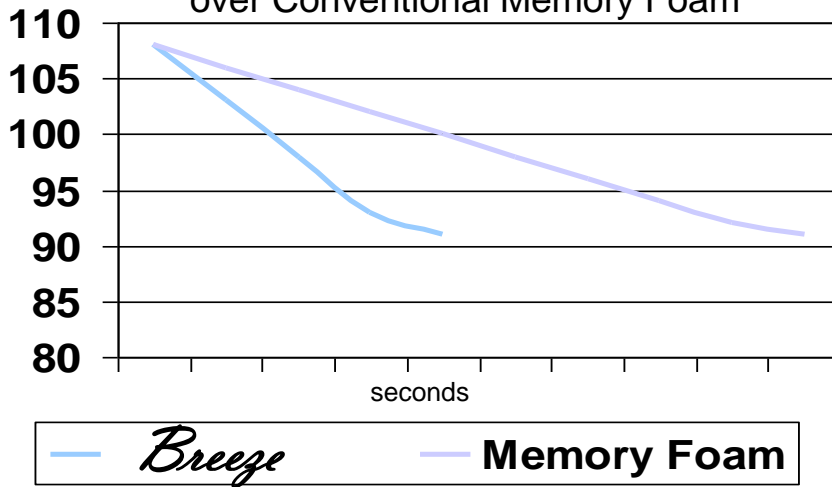
Our collection of memory foams offers the most advanced technology of support that naturally conforms to your body contour while relieving pressure at the most critical areas.

- Ventilation for Cool Comfort
- Molds Naturally to your Body
- Pressure Point Relief
- Superior Energy Absorption
- Maximum support & Naturally Conforming
- Environmentally Friendly with Renewable and Natural Content



Breeze™

37% Faster Temperature Dissipation
over Conventional Memory Foam

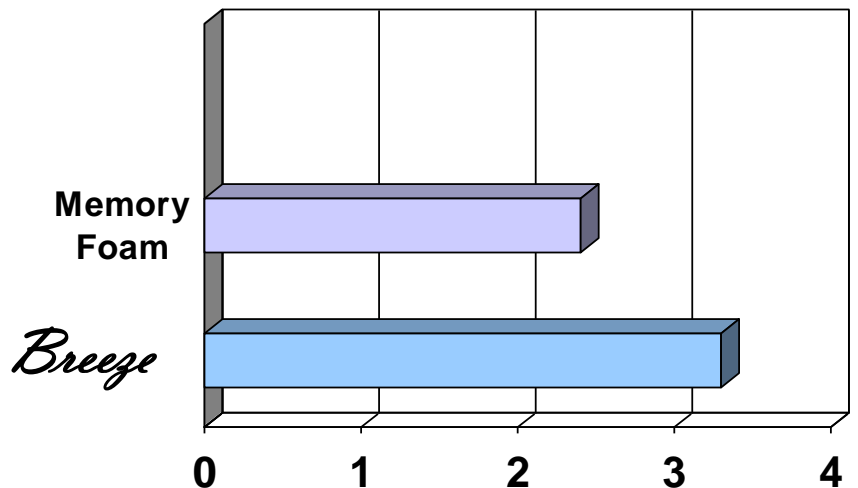


Breeze is available in:

- AdaptaFlex 300
- AdaptaFlex 400
- AdaptaFlex 500
- AdaptaFlex 600

Thickness 1" to 5"

27% increase in Air Flow



For more information on Memory Foams refer to our AdaptaFlex data sheet and Enviroflex Data sheet.

419.647.4191

www.flexiblefoam.com

